

**DOCUMENT NOT CONSIDERED FINAL
UNLESS ALL SIGNATURES COMPLETED**

NOTES

- 1 PROVIDE FLAGPOLE LIGHTS, FOUNDATIONS AND CONNECTION TO LIGHTS. ORIENT FLAGPOLE LIGHTS IN RELATION TO THE FLAGPOLE AS DIRECTED BY THE ENGINEER. CONSULT WITH ENGINEER PRIOR TO INSTALLING FOUNDATIONS.
- 2 MOVE THE EXISTING RED CONDUCTOR TO THE CONTACTOR TERMINAL ADJACENT TO THE EXISTING BLACK CONDUCTOR THEREBY MOVING ALL EXISTING LIGHTING TO CIRCUIT-1 WHICH ALLOWS THE SPARE TO BE USED FOR THE FLAGPOLE LIGHTS
- 3 AIM LUMINAIRES AS DIRECTED BY THE ENGINEER.

SCOPE OF WORK

INSTALL TWO FLAGPOLE LIGHTS WITHIN AN EXISTING ROUNDABOUT TO LIGHT A PROPOSED FLAGPOLE INSTALLATION. LIGHTS TO BE POWERED FROM THE EXISTING LIGHTING CONTROL SYSTEM FOR THE BRIDGE PEDESTRIAN LIGHTING SYSTEM.

DESIGN CRITERIA

2020 NATIONAL ELECTRICAL CODE
2011 AASHTO ROADSIDE DESIGN GUIDE

ROADWAY STANDARDS

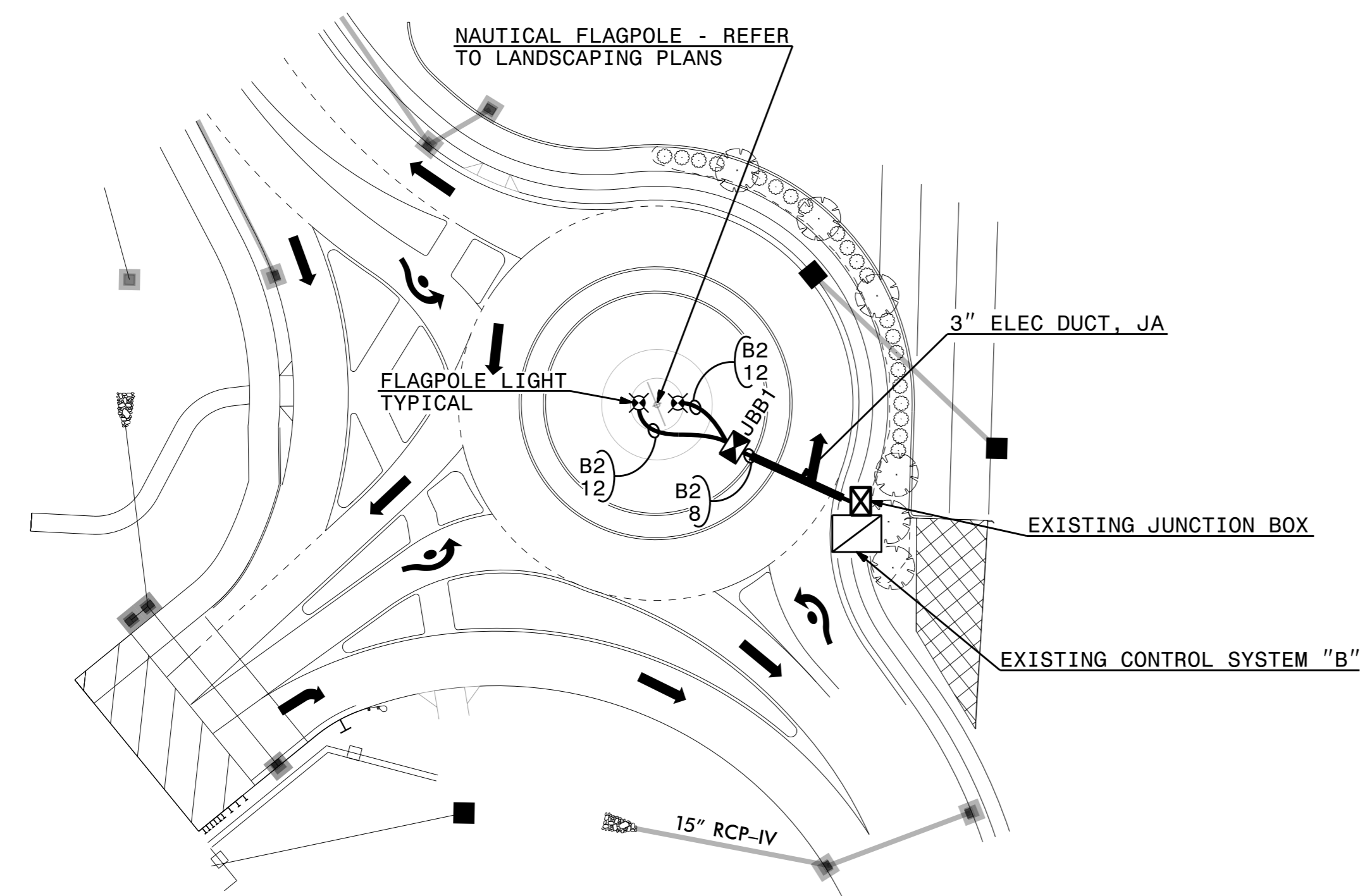
THE FOLLOWING ROADWAY ENGLISH STANDARDS AS APPEAR IN "NCDOT ROADWAY STANDARD DRAWINGS", ROADWAY DESIGN UNIT-N.C. DEPARTMENT OF TRANSPORTATION RALEIGH, N.C., DATED JANUARY 2018 ARE APPLICABLE TO THIS PROJECT AND BY REFERENCE HEREBY ARE CONSIDERED A PART OF THESE PLANS:

STD NO.	TITLE
1409.01	ELECTRICAL DUCT
1410.01	FEEDER CIRCUITS
1411.01	ELECTRICAL JUNCTION BOXES

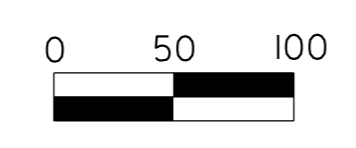
ALL WORK SHALL BE IN CONFORMANCE WITH DIVISION 14 OF THE STANDARD SPECIFICATIONS FOR ROADS AND STRUCTURES, DATED JANUARY 2018.

LEGEND

- EXISTING CONTROL SYSTEM
- EXISTING ELECTRICAL JUNCTION BOX
- PROPOSED FLAGPOLE LUMINAIRE. TEXTURED BLACK MATTE COLOR FINISH. 85 WATT (MAXIMUM) LED. DESIGNED FOR USE IN COASTAL/MARINE ENVIRONMENTS.
- PROPOSED ELECTRICAL JUNCTION BOX. TYPE IG18, SIZE 18"L X 12"W X 18"D
- REFERENCE TO CORRESPONDING NOTE AS NUMBERED.
- PROPOSED FEEDER CIRCUIT. CONTROL SYSTEM (A), CIRCUIT NUMBER (1) PLAN SYMBOL (8). SEE TABLE A, THIS SHEET.
- PROPOSED ELECTRICAL DUCT SIZE 3" TYPE (JA) OR (BD) LOCATION: SEE TABLE B, SHEET E1A.
- 3" ELEC. DUCT JA & BD



FLAGPOLE LIGHT LOCATIONS



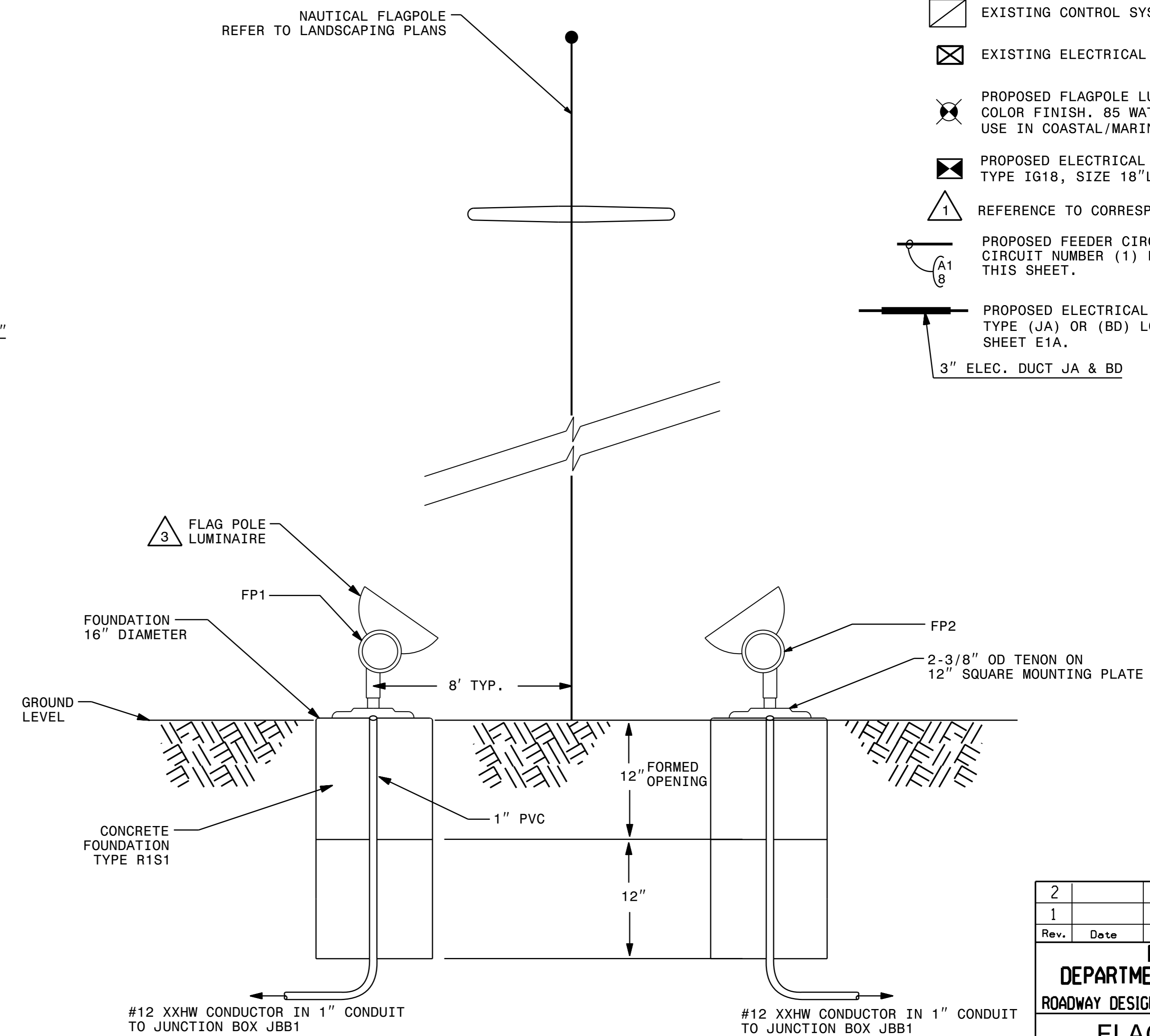
LOAD SCHEDULE PATH & FLAGPOLE LIGHTS								
EXISTING				EXISTING CONTROL SYSTEM "B"				
CIRCUIT ID	PATH LIGHTS 15 W LED	AMPS @ 240V	KW LOAD	BREAKER SIZE (AMPS)	PATH LIGHTS 15 W LED	FLAGPOLE LIGHTS 85W MAX LED	AMPS @ 240V	KW LOAD
B1	L161 - L320	10.0	2.4	15	L161 - L320		10.0	2.4
*B2				15		FPL1, FPL2	0.71	0.2
TOTAL	160	10.0	2.4		160	2	10.71	2.6

*NOTE: USE SPARE BREAKER AS 'B2' IN THE EXISTING CONTROL SYSTEM

**TABLE "A"
CIRCUITRY CONDUCTOR CONDUIT TYPE & SIZE**

PLAN SYMBOL	DESCRIPTION	CONTRACT ITEM
8	2 #8 Ø 1 #10G 1.5" P	2 - 8 W/G FEEDER CIRCUIT IN 1.5" CONDUIT
12	2 #12 Ø 1 #12G 1" P	2 - 12 W/G FEEDER CIRCUIT IN 1" CONDUIT

**PROVIDE TYPE XXHW CONDUCTOR INSTEAD OF TYPE USE-2



FLAGPOLE LIGHT DETAILS

(NOT TO SCALE)

Rev.	Date	Description	Approved
2			
1			

**NORTH CAROLINA
DEPARTMENT OF TRANSPORTATION
ROADWAY DESIGN LIGHTING/ELECTRICAL SECTION**

**FLAGPOLE LIGHTING
SURF CITY BRIDGE/S. NEW
RIVER DRIVE ROUNDABOUT
SURF CITY
PENDER COUNTY**

Drawn By: RGH Approved By: RCK Dwg No.:

2/10/2021 10:06 AM R:\Lighting\Lighting Design\Roland Ave Lighting\B4929_LE_PSH-E2_Only_Flag_Lights.dgn